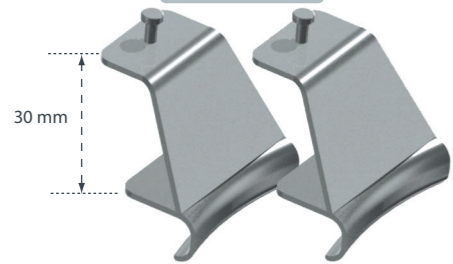


DC30650-00



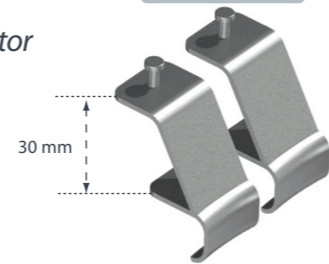
Navarro Thoracic Retractor

DC30651-30



Classic Blades for Navarro Retractor  
30 mm Depth

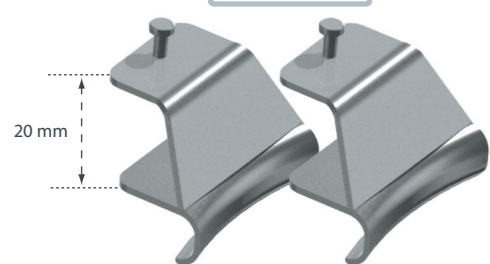
DC30652-30



Narrow Blades for Navarro Retractor  
30 mm Depth

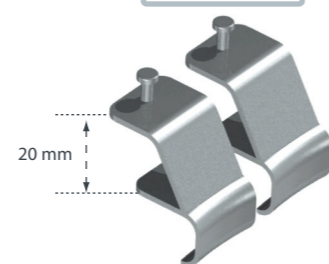
Options :

DC30651-20



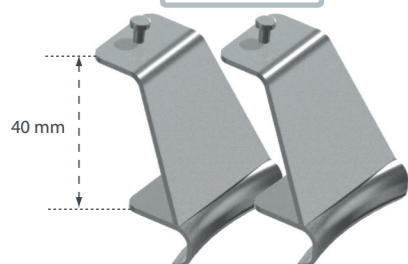
Classic Blades for Navarro Retractor  
20 mm Depth

DC30652-20



Narrow Blades for Navarro Retractor  
20 mm Depth

DC30651-40



Classic Blades for Navarro Retractor  
40 mm Depth

DC30653-30



Accessory Blades for Navarro Retractor  
30 mm Depth

Delacroix-Chevalier

Person  
Surgical Ltd.

sales@piersonsurgical.com

www.piersonsurgical.com

01225 766632

Delacroix-Chevalier  
Paris

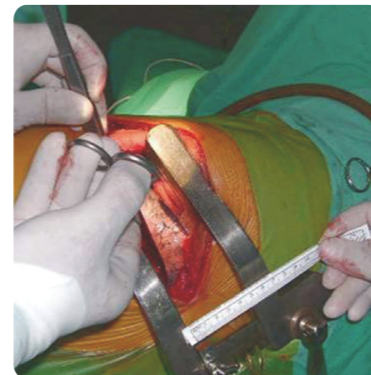
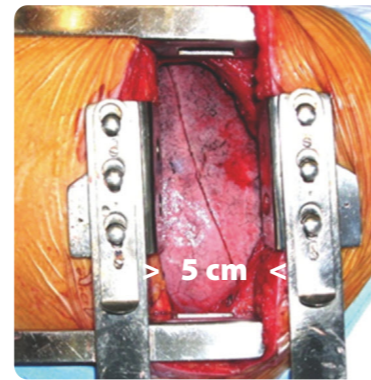
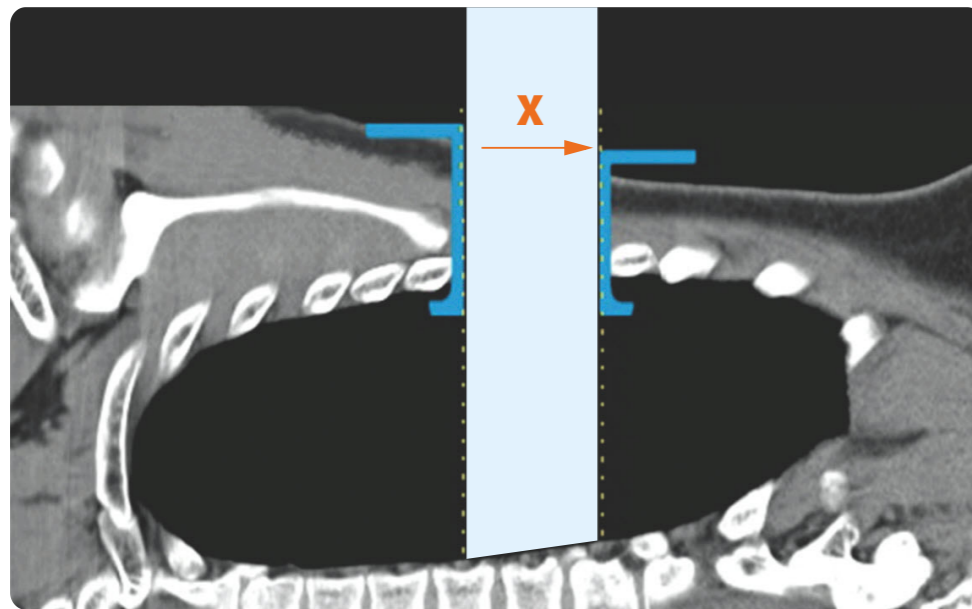
Widen your field of view !



Navarro Thoracic Retractor

With a standard Finochietto retractor

Cylindrical Field of View

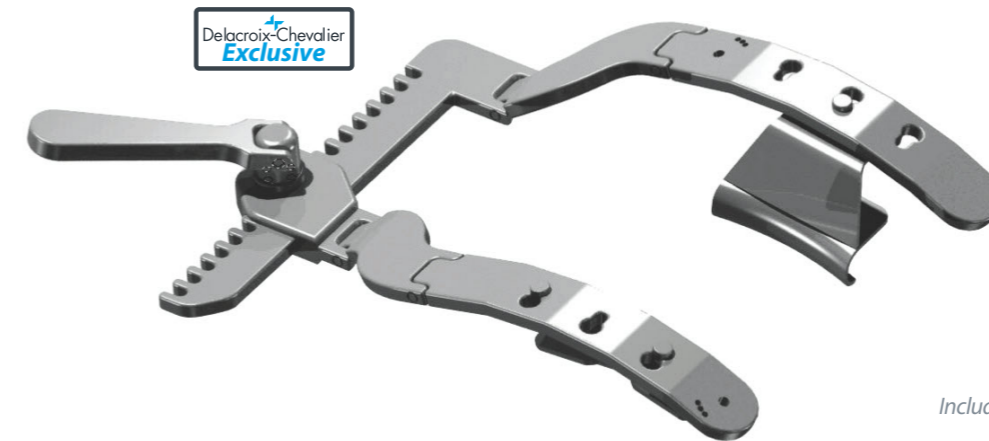


DC30650-00

Patented Pattern

Navarro Thoracic Retractor

- Wider field of view thanks to specially designed blades,
- No need to use additional Finochietto retractors : use accessory blades
- Greater levels of comfort
- Adaptable for each patient with 8 possible blade configurations.



Included : DC30651-30 and DC30652-30

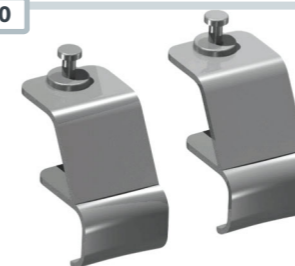
DC30651-30



Classic Blades For Navarro Retractor, 30 mm Depth

- Specially designed to optimise the vision cone,
- Provided in pairs,
- Available in 3 different depths :  
- ask for DC30651-20 for 20 mm depth,

DC30652-30



Narrow Blades For Navarro Retractor, 30 mm Depth

- Designed to be used in a 3 blade configuration with one of the blades DC30651-30,
- The 3 blade configuration improves the stability of the retractor for standard or large thoracotomies,
- Available in 20 mm depth :

DC30653-30

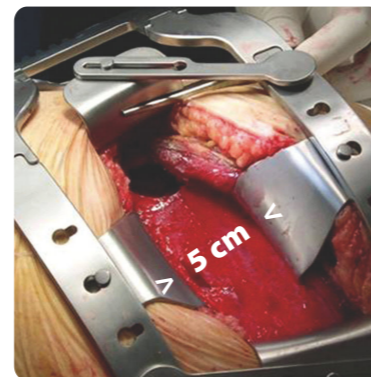
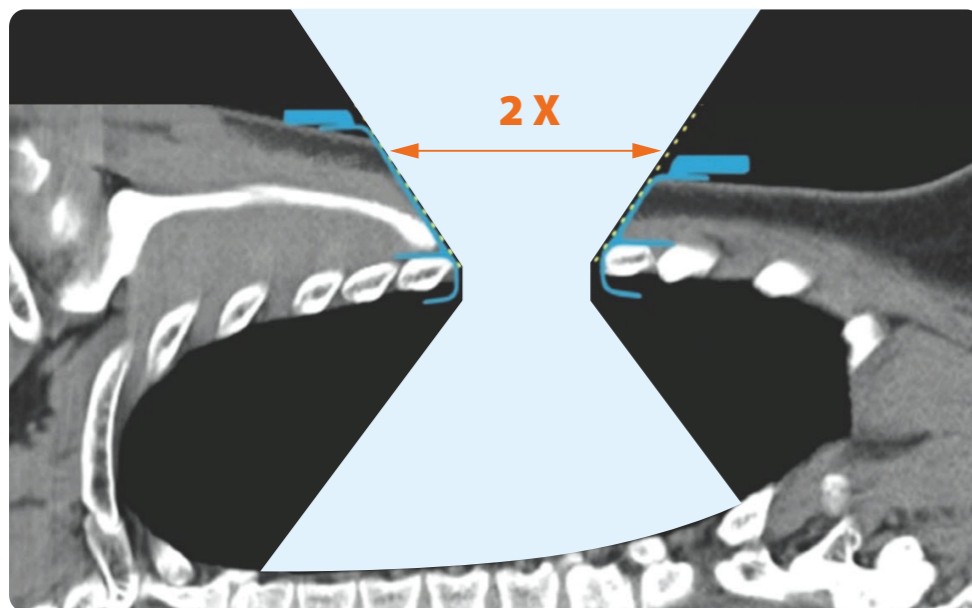


Accessory Blades, 30 mm Depth (option)

- For smooth retraction of uncut muscles
- Adapts perfectly to any patient and size of opening :
- - option to add 0, 1 or 2 supplementary blades,
- Widens thoracotomy either to the back or front.

With the new Navarro Retractor

Conical Field of View



- Widens Field of View
- Easier to use